

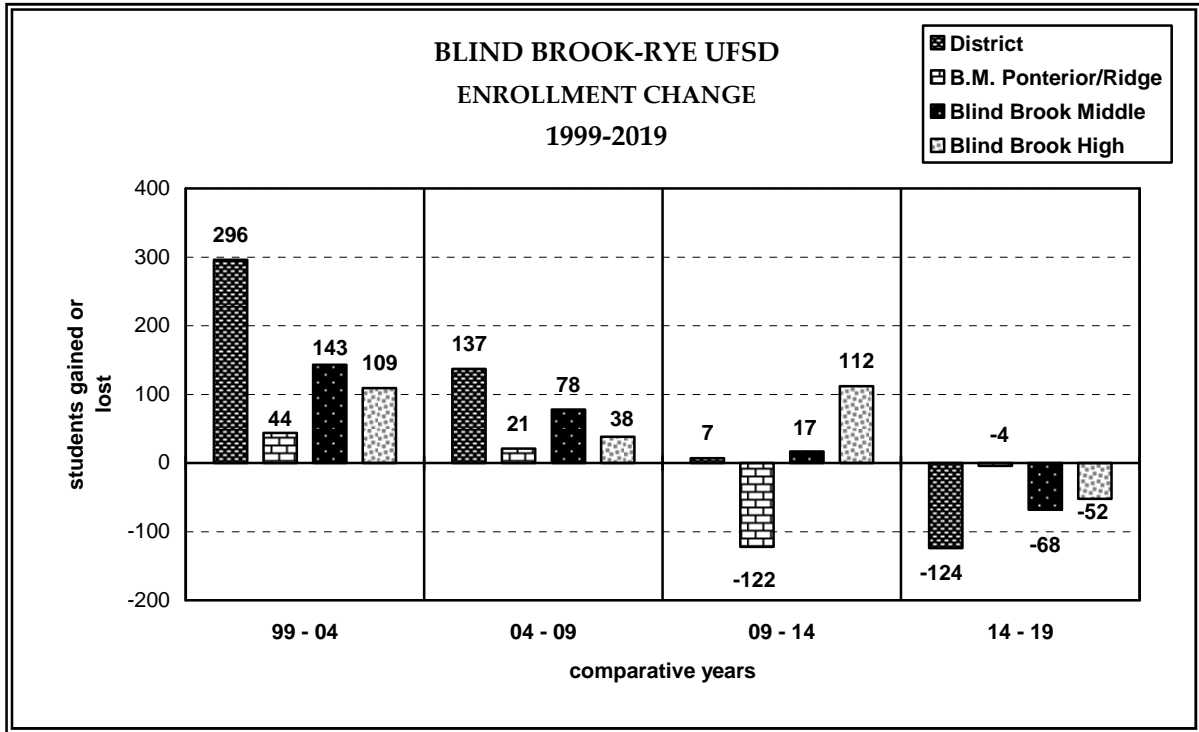
# **LONG RANGE PLANNING STUDY UPDATE**

*A service of Western Suffolk BOCES  
Office of School Planning and Research*



**BLIND BROOK – RYE  
UNION FREE SCHOOL  
DISTRICT**  
*December 2009 Update*





The Blind Brook-Rye Union Free School District enrollment grew by 433 students, or 39 percent, between 1999 and 2009. All grade configurations showed growth during the historical period. Decreases are projected in the elementary grades during the next ten years. The middle and high school grades will see increases during the first half of the projection period, but this will be followed by decreases during the latter half of this period. The District enrollment is expected to peak at 1,575 students in 2011 and again in 2012, with decreases expected all years thereafter through the remainder of the projection period.

# I N T R O D U C T I O N

At the request of the Blind Brook-Rye Union Free School District, the Western Suffolk BOCES Office of School Planning and Research conducted this study that includes a review of past projections made by Western Suffolk BOCES, and an assessment of demographic and historical enrollment trends in order to prepare new projections through the year 2019.

Blind Brook-Rye Union Free School District is committed to meeting the educational needs of its students throughout the future. The continued monitoring of enrollment trends will allow the district the data to consider a variety of educational issues. The foundation for this study is in keeping with the promotion of the basic district mission and philosophy.

The Board of Education and the Superintendent's efforts to plan for the future continuation of excellence in education through sound management practices is fostered by comprehensive, objective data, such as contained within this Comprehensive Long Range Planning Study Update. This update serves to provide objective data that the District's Board of Education and Administration can use in planning for the future. Planning is, however, a dynamic process that needs to reflect change. The data provided to the district through this study can be modified through periodic updates that allow the incorporation of subtle changes in district trends. This study provides an update to the demographic and enrollment study update prepared for the district in February 2008.

Joan Townley, School Planning Coordinator, oversaw all aspects of the study. Shu-ling Liu, Research Technician, served as researcher, providing analysis and forecasting assistance and technical support, Janice Schwartz, Educational Planning Assistant, provided research assistance and prepared the report for printing.

Mr. William Stark, Superintendent of Schools, provided access to district records. Jonathan Ross, Assistant Superintendent for Facilities and Finance, provided direction on the study scope, compiled the necessary data for the study, and acted as district liaisons to the study, thus enabling the study to accomplish its objectives.

Additionally, selected references and resources were used:

Economic Report of the Hudson Valley, Annual 2008; Marist College, June 2009  
Educational Research Service, Arlington, Virginia  
Hudson Regional Report; October 2008  
Local Non-Public Schools  
MidHudsonNews.com  
National Center for Health Statistics – National Vital Statistics Reports  
National Center for Education Statistics; the Condition of Education 2009  
New York State Division of Housing and Community Renewal: Statewide Affordable Housing  
Needs Study – Mid- New York State Education Department  
New York State Health Department – Bureau of Vital Statistic  
New York State Office of Real Property  
New York Times  
USA Today  
U.S. Dept of Commerce, Bureau of the Census  
U.S. Department of Education National Center for Educational Statistics  
U.S. Department of Health and Human Services-National Center for Health Statistics  
U.S. Office of Immigration Statistics  
Village of Rye Brook Building Department  
[www.bankrate.com/finance](http://www.bankrate.com/finance)  
[www.wikinvest.com](http://www.wikinvest.com)

## **ENROLLMENT - PAST, PRESENT & FUTURE**

A. Birth Data.....	1
B. Population.....	2
C. Housing.....	3
D. Non-Public School Enrollment.....	6
E. Enrollment Projection Methodology.....	6
F. Accuracy of Previous Projections.....	8
G. District Enrollment.....	9
H. Enrollment of District Schools.....	11

## **APPENDICES**

APPENDIX A - Historical and Projected Enrollment Worksheets
APPENDIX B - Enrollment Graphs

## **TABLES**

	<b>PAGE</b>
Table 1 Housing Sales in the Blind Brook-Rye UFSD 2000-2008.....	5
Table 2 Projection Accuracy of February 2008 Western Suffolk BOCES Study.....	9
Table 3 Blind Brook-Rye UFSD Enrollment .....	10
Table 4 Blind Brook-Rye UFSD Projected K-5 Elementary Enrollment .....	12
Table 5 Blind Brook-Rye UFSD Projected Elementary Instructional Sections .....	12
Table 6 Blind Brook-Rye UFSD Projected Middle/High School Enrollment .....	14

## ENROLLMENT - PAST, PRESENT & FUTURE

*School enrollment growth occurs as a result of more children being born, moving in to a community, or returning from non-public schools. The Blind Brook-Rye Union Free School District has experienced an overall growth in district K - 12 enrollment during the historical period 1999 through 2009. This enrollment growth is accounted for by increased birthrates, changing resident characteristics and housing factors.*

### **A. BIRTH DATA**

Finalized birth data from the *National Center for Health Statistics (NCHS)* for 2006 indicates a three percent increase in recorded births between 2005 and 2006. This was the largest number of births (4,265,555) for all reporting groups since 1961 and the largest single year increase since 1989. In 1990, this statistic peaked, followed by a downward trend until 1997. Since that time, the total number of births has increased but has remained below the 1990 peak. Although the 2006 data suggests what is described as a “baby boomlet,” some demographers speculate that births in 2008 and 2009 may show a decline as a result of the slower economy. Some families choose to postpone having children during difficult economic times. Other demographic factors, such as race or age, can also affect birth rate.

The age of the mother also plays an important role in the analysis of population growth. The average age of first-time mothers, both in the U.S. and in developing nations, increased from 21.4 years to 25.0 years between 1970 and 2006. At the end of this reported period, Asian or Pacific Islander women had the oldest average age at first birth (28.5 years) and American Indian or Alaskan Native women had the youngest (21.9 years). This statistic is significant because it influences the number of births a woman might have in her life which, in turn, impacts the size, composition and future growth of the population. The *NCHS* has also reported that, in 2006, the U.S. fertility rate for women in all groups aged 15 to 44 years rose to 68.5 per thousand, an increase of three percent over 2005 and the highest since 1991. The only exceptions were the youngest mothers (under age 15) for whom the rate declined slightly and mothers aged 45 - 49, for whom the rate was unchanged. Further, the increase in birth rates for women aged 35 and older is due, in part, to the use of fertility drugs as well as women choosing to postpone childbirth until later in life.

Data reveals that the number of births increased one percent for non-Hispanic white and 5-6 percent for non-Hispanic black and Hispanic women. In addition, births to Asian or Pacific Islander and American Indian or Alaska Native women increased four and six percent respectively. Among the specified Hispanic groups, births increased 4 - 6 percent for Mexican, Cuban, and Puerto Rican women and nine percent for Central and South American women. It is important to note that, while this data reflects birth statistics for American-born women, fertility rates often rise among immigrant women who have left their homelands to live in the United States.

In addition, the *National Center for Health Statistics* reports that the birthrate for unmarried women increased seven per cent between 2005 and 2006. This rate has jumped 16 per cent since 2002, the most recent low. There were over 1.6 million births to unmarried women, accounting for 38.5 percent of all births. Also, the rapid rise in multiple birth rates over the last several decades may have ended. The 2006 twin birth rate remained essentially unchanged from 2005 and the “triplet plus” birth rate declined five percent from 2005-2006. This rate soared more than 400 percent between 1980 and 1998, but is down 21 percent since then.

Local data from the *New York State Department of Health* show a relatively stable trend in the number of births in **Westchester County** since 1990, with a peak of 13,333 births recorded in 1991. Following this peak, births fluctuated with a sharp rise of almost 6 percent noted in 2000. Subsequently, the number of births dropped and has been declining each year since then. The finalized data for 2007 indicate that births have fallen to an historical low.

## **B. POPULATION**

The population of the Blind Brook - Rye Union Free School District is 6,376 based on 2008 estimates. This represents an increase of 3 people when compared to 2007 estimates. Revised U.S. Census estimates suggest that Westchester County’s population grew by 30,484 people, or 3.3 percent, between 2000 and 2008. In comparison, the population of New York State grew only by 2.3 percent, while the United States saw growth of 6.8 percent during this same time period. Over the last year, the number of people living in the United States, and more specifically, New York State, remained stable, with growth of less than 1 percent noted between 2007 and 2008.

Children 18 and under accounted for 23 and 24 percent of the population, respectively, in New York and the United States in 2008, according to the U.S. Census Bureau. Children under the age of five represented 6 percent of New York residents and nearly 7 percent of United States citizens last year, while 20 percent of the nation’s population was made up of school-aged children aged 5 - 19. Similarly, New York’s school-aged population totaled 19.5 percent of all residents. Almost half of the nation’s population was between the ages of 20 and 54, and approximately 24 percent of the population was aged 55 and over in 2008. New York’s resident population is reflective of the national distribution, with a reported fifty percent of adults falling between the ages of 20 - 54 and 25 percent of all people aged 55 years or older.

Westchester County’s population continues to experience changes in the age distribution of its residents, as well. Westchester County saw a decline in the number of children under age 5 between 2000 and 2008, while the school-aged population remained relatively stable. The percentage of adults aged 20 - 54, declined over the last eight years, while the population aged 55 and over grew by 3 percent during this time. In 2008, the median age in Westchester County was 40 years, rising from 39.3 years in 2007, and continues to be greater than in New York State (38 years) and the nation (36.8 years).

While age correlates with birth rate, other demographic factors, such as race, affect the population, as well. According to the Census Bureau, minorities, who now account for about one-third of the total U.S. population, will become the majority by 2042, and reach 54 percent by 2050. While the White population is projected to comprise about 46 percent of the total

population in 2050, the Hispanic population is expected to double from 15 percent of the population to 30 percent between 2008 and 2050. The Asian ethnic group is expected to show growth of more than 4 percent during this time (from 5.1 to 9.2 percent) as the Black population is projected to grow slightly from 14 to 15 percent of the population over the next 40 years.

Over time, Westchester County has become more racially and ethnically diverse, reflecting national trends. Nationally, since 2000, the White population has declined from 71.3 percent to approximately 68.3 percent of the total resident population, while the Hispanic population has grown by 3 percent since the last Census. The Asian ethnic group has also grown from 4.5 percent to 5.5 percent of the population between 2000 and 2007. The Black population declined slightly during this same time.

In 2000, the US population was 281 million people, of which 11 percent were foreign-born. As of the last Census, 20 percent of New York's residents were foreign-born. These residents account for a large portion of U.S. births. While native-born Americans average 13 births per thousand people, immigrants average roughly 28 births per thousand. Immigration is the second largest contributor to U.S. population growth, preceded only by the immigrants' U.S. born children. Together, immigrants and their U.S. born children account for the majority of U.S. population growth. According to the U.S. Census Bureau, the number of foreign-born residents accounted for 24.1 percent of the Westchester County population in 2007, the latest year available. This was an increase of nearly 2 percent since 2000.

## **C. HOUSING**

A tight credit market, a staggering number of foreclosures, increasing unemployment and declining consumer confidence created a "perfect storm" for the nation's housing market. Housing prices are down 30 percent from their 2006 peak, household incomes are shrinking, employers are still cutting jobs and consumer confidence remains weak. This year, 40 - 45 percent of sales have been foreclosures or short sales; historically, that figure has been around five percent.

Although the nationwide housing market shows signs of stabilizing, there are still indicators that it is fragile and related troubles are far from over. There are concerns that any positive signs might be temporary, with a large number of foreclosures looming in the future. While no further steep decreases in housing prices are anticipated, some further declines can be expected as prices remain high when compared to income and rent. This will be compounded by continued falling consumer confidence. In addition, there is concern that the boost the housing industry experienced from the "first-time buyer credit" market is temporary and the market will experience declines again when this tax-credit expires.

Conditions in the housing market are indicative of the state of the economy as a whole. Homes are durable goods, meaning that new home construction and sales are often highly correlated with economic cycles; people tend to buy new homes only when they are confident that they will have enough income to pay for them, so economic downturns can depress the housing market considerably. Housing developers faced excessively low interest rates during the late 1990's and early 2000's. They used this to promote homeownership as a possibility for all. Housing was offered at temporary, artificially low interest rates to unsuspecting buyers. When rates began to rise back to normal levels, many homeowners could no longer afford the higher

mortgage payments. The result was the bursting of the “housing bubble.” Builders were left with large inventories and a decreasing demand for housing, while mortgage lenders had customers who could not afford the new, higher rates. While overall housing prices may be recovering, the high end of the housing market may take longer to recover. Homes costing more than \$430,000 are not increasing in value as quickly as lower priced homes, according to the S&P/Case-Shiller Index of Home Prices.

Since 9/11, there have been increasing numbers of people moving from the densely populated New York metropolitan area and its adjacent suburbs to the Hudson Valley. Wanting to escape the crowding and high cost of living associated with living in New York City, many people have relocated to the Hudson Valley area to live while they commute to the city for work. An influx of higher-income residents from New York City has been cited as a contributing factor to skyrocketing home prices and rents in the mid-Hudson region in recent years. In the 2006-2007 period, net migration from New York City into the Hudson Valley Region was a positive 4,411 households. On average, households that migrate from New York City to the Hudson Valley have adjusted gross income in the year of the move that is above the average adjusted gross income of non-migrants.

Because wages earned outside resident counties are often higher, many residents commute to jobs in New York City. In Ulster and Orange Counties, over 30 percent of residents commute to jobs outside their resident county and over 70 percent of Putnam County residents are commuters. Migration within the Hudson Valley displayed a near perfect correlation with median housing values: migration flowed from high median housing areas to areas with lower median housing values. The counties that received the largest regional inflows were Dutchess, Ulster, and Orange.

In 2008, the number of existing homes sold fell almost 23 percent when compared to 2007 and more than 29 percent when compared to 2006. A loss of 40 percent was noted since the peak in 2004. The average housing price in 2008 decreased in the region by more than eight percent when compared to 2007; the median price fell almost 6 ½ percent. Construction spending on single family homes declined almost 53 percent. Each county in the region reported declines in home sales. Between 2007 and 2008 in Westchester County, home sales declined by almost 33 percent.

In 2008, the median selling price of an existing home in the Hudson Valley was \$318,540. This was a decline of 6.44 percent when compared to 2007. During the same time period, the median selling price of an existing home in New York State declined 9.65 percent; nationally it declined 9.54 percent. Home prices in Dutchess, Orange, Putnam, Rockland and Westchester exceeded both the state and national averages of \$318,009 and \$197,600 respectively. The only counties in the region with median selling prices below the state and national medians were Greene and Sullivan. Since 2000, however, the average selling price of a single-family home in the Hudson Valley increased 75 percent; the median selling price increased 115 percent. Westchester County’s median home sale price fell to \$650,000 in 2008, which is approximately 4.4 percent below the 2007 median price. However, the median home price in Westchester County remained the highest in New York State.

The number of construction permits issued in the Hudson Valley fell by 29 percent from 2007 to 2008. Six counties in New York State (Columbia, Dutchess, Orange, Putnam, Ulster, and Westchester) saw the lowest number of housing permits for single-family homes issued in 2008, when reviewing the past ten years.

There is a pressing need for affordable, workforce housing in the Hudson Valley. However, a “Not in My Backyard” (NIMBY) attitude persists and is considered a major obstacle to the development of this type of housing. With existing affordable rental units deteriorating, there is an insufficient number of this type of housing. The lack of affordable sites and large lot zoning are also seen as impediments. The Hudson Valley area consists mainly of rural and suburban communities, with some urban settings, and primarily owner occupied units.

As shown in Table 1, approximately 57 - 159 homes were sold in the district each year between 2000 and 2008; the highest turnover occurring in 2000 and the fewest number of homes sold in 2008. Housing sales in the Blind Brook-Rye School District decreased in 2006, when the housing downturn began. Since then sales have continued to decline. This lowered level of sales activity has been seen throughout the region, New York State, and the country. The median home price for the Blind Brook-Rye School District in 2008 was \$813,280; this represents an 8.5 percent decrease when compared to the median price in 2007. However, despite the decline, the median home price increased by approximately 45 percent between 2000 and 2008.

**TABLE 1 – HOME SALES IN BLIND BROOK - RYE UFSD 2000 - 2008**

YEAR	# OF SALES	MEDIAN PRICE
2000	159	\$560,425
2001	153	\$575,000
2002	122	\$662,500
2003	114	\$731,000
2004	150	\$800,000
2005	124	\$872,500
2006	76	\$913,000
2007	86	\$889,000
2008	57	\$813,280

Source: New York State Office of Real Property Services

The Village of Rye Brook Building Department was contacted regarding the status of previously reported projects, as well as any new subdivisions before the Planning Board. A recent update from the Department’s office representative indicated that *Sterling Glen at BelleFair (formerly Stone Gate)* has been completed and is occupied. The *Kingswood* Project, a 30 unit condominium development, has received approvals; however, there are still a number of conditions the developer must meet before starting to build. In addition, the Department has received a low-income housing application for a 3-family home. A ten-unit residential condominium project has been approved but no building permits have been issued.

## D. NON-PUBLIC SCHOOL ENROLLMENT

An additional factor that has the potential to impact public school enrollment is the attendance of resident students in non-public schools. According to a report published by the *National Center for Education Statistics*, between 1995 and 2001, national nonpublic school enrollment in kindergarten through grade 12 grew from 5.9 million to 6.3 million students. However, by 2007, enrollment had declined again to 5.9 million students, constituting about 11 percent of all elementary and secondary school students.

The percentage of children enrolled in private schools also differs by region. In 2007, the percentage of students in nonpublic schools was higher in the Northeast (15 percent) than in the Midwest (11 percent), the South (10 percent), and the West (9 percent).

Westchester County ranked 10th out of the 62 counties in the state with 15.0 percent of all students attending non-public schools in 2007, the last year for which county ranking is available. This compares to the New York State estimated figure of approximately 14.4 percent in 2007. The Blind Brook-Rye School District reported that currently 80 students, or 4.9 percent, of the total student population attend non-public schools.

Private schools are struggling with declining enrollments that are not necessarily related to the quality of the school program, but to demographic and economic factors prompting consolidation and/or school closings. Many private school officials credit financial concerns as the main reason for the declines. Also, the variety of religions represented by new immigrants to the area have prompted more diverse school settings and is having an impact on some districts' enrollment. Some private schools, however, have initiated new and innovative programs to help counter this trend. The district's rate of 4.9 percent has been stable over the last five years.

Surveys were sent to local preschools and direct contact was made with them. Most cited decreasing enrollments due to the housing market and the economy. None said that the preschool population was smaller, however. They all claimed that their decreases were caused by economic factors and noted that enrollments were better this year than the previous year.

## E. ENROLLMENT PROJECTION METHODOLOGY

This study, like the previous *Western Suffolk BOCES* study update completed in February 2008, utilizes fall enrollment data provided by the Blind Brook-Rye School District. The methodology employed in preparation of projections requires the use of statistics, and number rounding of fractions to the next highest whole number (e.g., 31 could equal 31.33 or 30.82). Therefore, individual numbers may not always add up to the presented total.

The Cohort Survival Model was used to project the district's enrollment patterns for the next ten years. *Three basic inputs were necessary:*

1. Actual enrollment by grade for 1999 - 2009 for the district [*Appendix A-2*] and each school [*Appendix A-8, A10*].
2. Grade-to-grade retention (migration) ratios for each two-grade transition to grades 1 - 12 for the past ten years for the district [*Appendix A-2*] and each school [*Appendix A-8, A-10*].

3. Projected kindergarten entering cohorts based on the number of live births in Westchester County five years before each year projected [Appendix A-4].

The Cohort Survival Model takes into consideration the normal community processes that affect school enrollment, which include:

1. The number of births and fertility rates
2. Normal in and out migration
3. Transfers to and from non-public schools
4. Population variations
5. Resident family characteristics

The enrollment projections contained within this report are based on assumptions generated through the demographic analysis. *This analysis led to the following assumptions:*

1. Population will continue to stabilize as the turnover of existing homes and new residential development remains limited and brings fewer younger families into the community. The turnover of approximately 50 - 125 homes each year is anticipated.
2. Anticipated birth levels remain at the lower level seen in recent years affecting kindergarten classes.
3. Non-public school enrollment will continue to be stable with approximately 4 - 5 percent of the district children attending non-public schools each year.

The Cohort Survival Model is very accurate in forecasting future enrollment patterns, but the occurrence of certain conditions would warrant modifications in these projections. *These conditions include:*

- A level of new housing activity, which is significantly higher or lower than that experienced by the District during the past three years.
- A significant change in the level of housing turnover from activity during the past three years.
- Expansion, consolidation, or the establishment of new non-public schools.
- Changes in economic conditions that affect employment, finance, and housing.
- Major sociological changes that evidence of changed values or attitudes affecting anticipated family size and birthrate.
- Household characteristics that significantly differ from the past three to five years, including number of persons per household and age of household occupants.

It is important for the reader to understand the nature of enrollment projections. Regardless of the methodology employed to produce projections, *all outcomes fall into three categories of reliability:*

- Category 1* - Those projections based on students already enrolled in the system are the most reliable projections.
- Category 2* - Those projections based on documented births are slightly less reliable than those of Category 1.
- Category 3* - Those projections based on estimates of future births are the least reliable.

Therefore, the most reliable projections are those calculated for the periods closest in time. The five-year period (2010 - 2014) projections are those best used in district planning and decision-making. That is because this first period consists mainly of Category 1 projections.

It is noted that the overall enrollment projections produced by Western Suffolk BOCES generally fall within a 4 percent margin of error. The greatest discrepancies in projections occur in the smallest subsets of those projections. For example, the projections for the district as a whole are likely to be the most accurate, and the projections of a building's particular grade level in a specific year are likely to be the least accurate. It is advised that updates to projections be continued on a periodic basis to adjust modifications warranted by subtle shifts in migration trends and demographic factors.

## **F. ACCURACY OF PREVIOUS PROJECTIONS**

A comparison was made between the enrollment projections presented in the February 2008 *Western Suffolk BOCES study* and the actual enrollments for 2008-09 and 2009-10.

As shown in *Appendices A-1, B-1, B-2* and *Table 2*, the February 2008 study projected the 2008/09 K - 12 enrollment at 1,555 students, while there were actually 1,578 students enrolled. This projection was within 23 students of the actual enrollment, reflecting accuracy at a 98.5 percent margin of error. The kindergarten was projected within nine students. The 2009/10 enrollment was projected at 1,576, while there are actually 1,548 students enrolled this year, bringing the accuracy to 101.8 percent. The largest discrepancy was at the kindergarten level, where there were 36 fewer students enrolled than projected. Grade level differences between the projections and the actual enrollments ranged between 0 - 9 students for 2008/09 and between 1 - 36 students for 2009/10.

**TABLE 2 - PROJECTION ACCURACY OF WESTERN SUFFOLK BOCES STUDY**

SCHOOLS	2008 ACTUAL	2008 PROJECTED	DIFFERENCE	ACCURACY
ELEMENTARY K-5 (INC SPEC ED)	829	820	9	98.9%
MIDDLE SCHOOL 6 - 8	352	344	8	97.7%
HIGH SCHOOL 9 - 12	397	392	5	98.7%
DISTRICT K - 12 (INC SPEC ED)	1,578	1,555	23	98.5%
SCHOOLS	2009 ACTUAL	2009 PROJECTED	DIFFERENCE	ACCURACY
ELEMENTARY K-5 (INC SPEC ED)	760	797	37	104.9%
MIDDLE SCHOOL 6 - 8	383	386	3	100.8%
HIGH SCHOOL 9 - 12	405	393	12	97.0%
DISTRICT K - 12 (INC SPEC ED)	1,548	1,576	28	101.8%

The inspection of the variations in the enrollment numbers, particularly in the grade-to-grade migration patterns, revealed year-to-year fluctuations in migration. These variations can be accounted for mostly by housing and non-public school attendance factors. These variations were taken into account in the current update. The subtle changes used in projection methodology as updates are conducted yield data that are accurate for enrollment and facilities planning.

**G. DISTRICT ENROLLMENT**

*The Blind Brook-Rye UFSD educates students within grades K - 12 in three District schools on two campuses. Grades K - 5 are housed at the B.M.P. Ridge Street School, grades 6 - 8 are housed at Blind Brook Middle School; and grades 9 - 12 are housed at Blind Brook High School.*

Table 3 presents the current and projected enrollment through 2019 for the district and each grade configuration. It is shown that the elementary grades (K - 5) are expected to reach their peak enrollment in 2010, with a student population that is smaller than the current one. The middle grades (6 - 8) are projected to enroll the greatest number of students (422) in 2011. The secondary grades are expected to peak in 2015, while the overall K - 12 district enrollment is projected to peak in 2011, and maintain that enrollment in 2012, at 1,575 students. This is 27 more students than are currently enrolled.

TABLE 3 - BLIND BROOK-RYE UFSD ENROLLMENT

		K-5	6-8	9-12	TOTAL K - 12
<b>Current</b>	<b>2009</b>	760	383	405	1,548
<b>Projected</b>	<b>2010</b>	736*	393	439	1,568
	<b>2011</b>	708	422*	445	1,575*
	<b>2012</b>	685	406	484	1,575*
	<b>2013</b>	650	417	505	1,572
	<b>2014</b>	638	400	517	1,555
	<b>2015</b>	650	363	539*	1,552
	<b>2016</b>	646	330	536	1,512
	<b>2017</b>	642	319	525	1,486
	<b>2018</b>	640	332	484	1,456
	<b>2019</b>	634	332	465	1,431

Note: It is noted that the sum of the numbers may not add up to totals due to rounding.

\* = denotes peak enrollment during 2010 - 2019

**K - 12 Enrollment** [Appendix A-2, A-5, B-3, B-7] consisted of 1,115 students in 1999 and rose to peak historical enrollment of 1,578 students in 2008. Enrollment declined this year to 1,548 students. An overall gain of 433 students, or 39 percent, was noted since 1999. The district enrollment is expected to increase initially and then decrease for most years of the projection period, with a projection period peak enrollment of 1,575 students expected in 2011 and 2012. This is 27 more students than are currently enrolled. An overall loss of 117 students, or 7.6 percent, is expected over the next decade.

*The projected changes can be attributed to several factors.*

◆ *First*, the kindergarten enrollment has ranged between 93 and 149 students over the last ten years, with the lowest enrollment seen this year, in 2009. The number of incoming kindergarten students is forecasted to range between 103 and 108 students throughout the projection period [Appendix A-4]. Projected kindergarten enrollments have been tempered as a reflection of the decreasing birth to kindergarten relationship due, in part, to the downturn in the economy and the reduced home sales activity. In addition, the New York State Department of Health adjusted county births beginning in 2000. These factors have resulted in lower anticipated kindergarten classes for the future.

◆ *Second*, the kindergarten class was larger than the exiting twelfth grade class of the previous year, in all but one year of the ten-year historical period. However, this trend is expected to reverse itself with smaller entering kindergarten classes when compared to exiting twelfth grade students beginning in 2013[Appendix A-7].

◆ *Third*, the District displays the average trend to gain or maintain students in transition to most grades. However, losses in transition are noted to fifth, eighth, ninth, tenth and twelfth grades. The greatest **average** gains have been in transition to the first, third, sixth and eleventh grades, most likely representing returns from non-public school programs [Appendix A-2].

◆ *Fourth*, increased occurred in the average grade level size of all grades during 2004 - 2009, as compared to 1999 - 2004. Gains are projected to continue only in grades 5 - 12 between 2009 - 2014. Between 2014 - 2019, gains are expected in grades 10 - 12. [Appendix A-7].

## H. ENROLLMENT OF DISTRICT SCHOOLS

### ELEMENTARY GRADES ENROLLMENT [Appendix A-3, A-6, B-7]

#### M. PONTERIO/ RIDGE STREET SCHOOL (K - 5/6) [Appendix A-8, A-9, B-4, B-7]

consisted of 695 students in 1999, which included 600 students in grades kindergarten through fifth, and 95 students in sixth grade. In 2003, the sixth grade was relocated to the middle school. Since 2003, enrollment increased each year, and reached a peak enrollment of 829 K - 5 students in 2008 was seen. A decrease this year brought the current enrollment to 760 students in 2009. An overall gain of 27 K - 5 students, or almost 4 percent, was seen since 2003. The number of students is expected to decrease next year to 736 students; however, this is expected to be the peak enrollment of the projection period. Subsequently, declines are anticipated in all of the remaining nine years through 2019. A decrease of 126 students, or 16.5 percent, is expected over the next ten years.

This school shows an average tendency to gain or maintain students to most grades. The entering kindergarten is expected to be smaller than the exiting fifth grade class of the prior year in nine of the next ten years. This will temper any gains due to the positive migrations and result in the projected decreasing enrollment.

This school currently houses thirty-seven (37) sections for the instruction of five kindergarten sections and six sections for grades 1 - 5. In addition, there are two self-contained special education classes. The average section size for this school is 21.6 students. The current average section size ranges from 18.6 students in kindergarten to 24.0 students in second grade. The need for 31 - 35 sections is projected from 2010 - 2019, in order to maintain class sizes at a maximum of 24 students in all grades, plus two special education classes. It is noted that some grades will approach or reach the maximum class size during the projection period with this level of classroom allocation. Should the district wish to provide additional sections, bringing class size averages below those described, then additional sections may be needed.

The projected K - 5 enrollment is presented in the following table.

**TABLE 4 - PROJECTED BLIND BROOK-RYE UFSD ELEMENTARY K - 5 ENROLLMENT**

		TOTAL K - 5 ENROLLMENT
<b>Current</b>	<b>2009</b>	760
<b>Projected</b>	<b>2010</b>	736
	<b>2011</b>	708
	<b>2012</b>	685
	<b>2013</b>	650
	<b>2014</b>	638
	<b>2015</b>	650
	<b>2016</b>	646
	<b>2017</b>	642
	<b>2018</b>	640
	<b>2019</b>	634

**ELEMENTARY INSTRUCTIONAL SECTIONS**

The current and projected need for elementary instructional rooms is presented in the following table. These needs are based on the applications of the class size maximum of 24 students in kindergarten through fifth grade.

It is shown that the district currently houses a total of 37 sections for the core instruction of grades K - 5 including two special education sections. The projected enrollment suggests the need for 31 - 35 during the projection period, assuming the continuation of programs as status-quo. Class sizes will vary, however, to levels within the guidelines.

**TABLE 5 - PROJECTED ELEMENTARY INSTRUCTIONAL SECTIONS**

GRADE	K-5	SP ED	TOTAL
<b>Actual... .... 2009</b>	35	2	<b>37</b>
<b>Projected 2010</b>	33	2	<b>35</b>
<b>2011</b>	33	2	<b>35</b>
<b>2012</b>	31	2	<b>33</b>
<b>2013</b>	29	2	<b>31</b>
<b>2014</b>	29	2	<b>31</b>
<b>2015</b>	30	2	<b>32</b>
<b>2016</b>	30	2	<b>32</b>
<b>2017</b>	30	2	<b>32</b>
<b>2018</b>	30	2	<b>32</b>
<b>2019</b>	30	2	<b>32</b>

## SECONDARY GRADES ENROLLMENT *[Appendix A-3, A-6, B-7]*

### **BLIND BROOK-RYE MIDDLE SCHOOL (6 - 8)** *[Appendix A-10, A-11, B-5, B-7]*

consisted of 162 students in grades 7 - 8 in 1999. Increases occurred over the next three years and, in 2003, sixth grade classes were relocated to the middle school. Following an initial decline in 2004, enrollment increased each year thereafter to the current enrollment and historical peak of 383 students in 2009.

Enrollment is expected to grow to a peak of 422 students in 2011, followed by a period of fluctuation. The 2019 enrollment of 332 students represents an overall decline of 51 students, or 13 percent, over the next ten years.

Blind Brook-Rye Middle School displays the average trend to gain students in migration to seventh grade and lose students to eighth grade. The entering sixth grade is projected to be larger than the previous year's exiting eighth grade class in five years of the projection period, which will temper the gains and losses in migration and result in the fluctuation projected.

### **BLIND BROOK-RYE HIGH SCHOOL (9 - 12)** *[Appendix A-11, B-6, B-7]*

consisted of 258 students in grades 9 - 12 in 1999. Enrollment rose every year during the ten-year historical period, reaching a peak enrollment of 405 students this year, in 2009. The current enrollment reflects a gain of 147 students, or approximately 57 percent, over the last ten years.

The enrollment at the high school level is anticipated to continue to rise through 2015, when the peak enrollment of 539 students is expected. Subsequently, losses of between 0.6 - 7.8 percent are expected in the remaining years of the projection period. Despite losses late in the projection period, the 2019 enrollment represents an overall gain of 60 students, or almost 15 percent of the current enrollment, over the next ten years.

This school displays an average trend to lose students as they progress to tenth and twelfth grades and gain students, on average, to eleventh grade. Larger cohorts will replace smaller exiting twelfth grade class over the next six years. These factors will influence and temper one another resulting in the projected enrollment pattern described above.

The current and projected middle and secondary school enrollments are presented in the following table. The enrollment at Blind Brook-Rye Middle School is expected to reach its projection period peak in 2011, when 422 students are anticipated to attend. Blind Brook-Rye High School enrollment is anticipated to reach its projection period peak in 2015, with 539 students. The combined middle and high school enrollments of grades 6 - 12, are expected to peak in 2013, when a total enrollment of 922 students is anticipated.

**TABLE 6 - PROJECTED BLIND BROOK-RYE UFSD  
MIDDLE AND HIGH SCHOOL ENROLLMENT**

		<b>BLIND BROOK-RYE MIDDLE SCHOOL</b>	<b>BLIND BROOK-RYE HIGH SCHOOL</b>	<b>TOTAL 6 - 12 ENROLLMENT</b>
<b>Current</b>	<b>2009</b>	383	405	788
<b>Projected</b>	<b>2010</b>	393	439	832
	<b>2011</b>	422*	445	867
	<b>2012</b>	406	484	890
	<b>2013</b>	417	505	922*
	<b>2014</b>	400	517	917
	<b>2015</b>	363	539*	902
	<b>2016</b>	330	536	866
	<b>2017</b>	319	525	844
	<b>2018</b>	332	484	816
	<b>2019</b>	332	465	797

Note: It is noted that the sum of the numbers may not add up to totals due to rounding.

\* = denotes peak enrollment during 2010- 2019

BLIND BROOK-RYE UNION FREE SCHOOL DISTRICT  
 ACCURACY OF WESTERN SUFFOLK BOCES FEBRUARY 2008 PROJECTIONS FOR 2008/09 & 2009/10

GRADE	2008/09			2009/10			Accuracy	
	Actual	Projected	Difference	Actual	Projected	Difference		
KINDERGARTEN	124	133	9	93	129	36		
FIRST	144	138	-6	120	134	14		
SECOND	132	130	-2	144	137	-7		
THIRD	138	131	-7	132	129	-3		
FOURTH	133	134	1	138	131	-7		
FIFTH	151	147	-4	133	130	-3		
SIXTH	112	109	-3	149	150	1		
SEVENTH	128	128	0	110	111	1		
EIGHTH	112	107	-5	124	125	1		
NINTH	108	107	-1	110	103	-7		
TENTH	97	98	1	104	106	2		
ELEVENTH	91	89	-2	102	97	-5		
TWELFTH	101	98	-3	89	88	-1		
SP ED	7	8	1	0	8		* Note: SP ED in the (K - 5) grade level count	
<b>K - 12 w/SP ED</b>	<b>1,578</b>	<b>1,555</b>	<b>-23</b>	<b>98.5%</b>	<b>1,548</b>	<b>1,576</b>	<b>28</b>	<b>101.8%</b>
K - 5 w/ SP ED	829	820	-9	98.9%	760	797	37	104.9%
6 - 8	352	344	-8	97.7%	383	386	3	100.8%
9 - 12	397	392	-5	98.7%	405	393	-12	97.0%

Note: The sum of the numbers may not add up to the totals due to rounding.

BLIND BROOK-RYE UNION FREE SCHOOL DISTRICT  
HISTORICAL DISTRICT ENROLLMENT

GRADE	1999	2000	2001	2002	2003	2004	2005	2006	2007	2008	2009
KINDERGARTEN	104	111	132	111	149	131	138	129	136	124	93
FIRST	101	115	121	126	116	147	137	133	131	144	120
SECOND	90	112	114	117	124	117	146	136	132	132	144
THIRD	99	99	111	111	115	123	113	148	134	138	132
FOURTH	117	102	101	104	115	112	123	110	151	133	138
FIFTH	89	118	105	102	108	109	107	121	107	151	133
SIXTH	95	92	122	105	100	102	113	106	126	112	149
SEVENTH	84	86	100	118	110	97	103	113	109	128	110
EIGHTH	78	87	88	97	120	106	96	98	111	112	124
NINTH	65	81	80	83	95	115	99	90	99	108	110
TENTH	70	70	83	85	84	95	108	98	90	97	104
ELEVENTH	67	69	65	81	81	81	96	103	99	91	102
TWELFTH	56	61	70	65	77	76	80	95	102	101	89
SP ED	0	0	0	11	6	0	6	6	8	7	0
<b>TOTAL K - 12</b>	1,115	1,203	1,292	1,316	1,400	1,411	1,465	1,486	1,535	1,578	1,548
<b>% CHANGE</b>		7.9%	7.4%	1.9%	6.4%	0.8%	3.8%	1.4%	3.3%	2.8%	-1.9%

Note: 2009-10 SP ED is in the (K - 5) grade level count.

MIGRATION	99 - 00	00 - 01	01 - 02	02 - 03	03 - 04	04 - 05	05 - 06	06 - 07	07 - 08	08 - 09	AVERAGE
K - 1	110.6%	109.0%	95.5%	104.5%	98.7%	104.6%	96.4%	101.6%	105.9%	96.8%	<b>101.4%</b>
1 - 2	110.9%	99.1%	96.7%	98.4%	100.9%	99.3%	99.3%	99.2%	100.8%	100.0%	<b>100.0%</b>
2 - 3	110.0%	99.1%	97.4%	98.3%	99.2%	96.6%	101.4%	98.5%	104.5%	100.0%	<b>101.0%</b>
3 - 4	103.0%	102.0%	93.7%	103.6%	97.4%	100.0%	97.3%	102.0%	99.3%	100.0%	<b>99.7%</b>
4 - 5	100.9%	102.9%	101.0%	103.8%	94.8%	95.5%	98.4%	97.3%	100.0%	100.0%	<b>99.1%</b>
5 - 6	103.4%	103.4%	100.0%	98.0%	94.4%	103.7%	99.1%	104.1%	104.7%	98.7%	<b>101.6%</b>
6 - 7	90.5%	108.7%	96.7%	104.8%	97.0%	101.0%	100.0%	102.8%	101.6%	98.2%	<b>100.9%</b>
7 - 8	103.6%	102.3%	97.0%	101.7%	96.4%	99.0%	95.1%	98.2%	102.8%	96.9%	<b>98.0%</b>
8 - 9	103.8%	92.0%	94.3%	97.9%	95.8%	93.4%	93.8%	101.0%	97.3%	98.2%	<b>98.8%</b>
9 - 10	107.7%	102.5%	106.3%	101.2%	100.0%	93.9%	99.0%	100.0%	98.0%	96.3%	<b>98.3%</b>
10 - 11	98.6%	92.9%	97.6%	95.3%	96.4%	101.1%	95.4%	101.0%	101.1%	105.2%	<b>102.4%</b>
11 - 12	91.0%	101.4%	100.0%	95.1%	93.8%	98.8%	99.0%	99.0%	102.0%	97.8%	<b>99.1%</b>

BLIND BROOK-RYE UNION FREE SCHOOL DISTRICT  
HISTORICAL DISTRICT ENROLLMENT

GRADE	1999	2000	2001	2002	2003	2004	2005	2006	2007	2008	2009
KINDERGARTEN	104	111	132	111	149	131	138	129	136	124	93
FIRST	101	115	121	126	116	147	137	133	131	144	120
SECOND	90	112	114	117	124	117	146	136	132	132	144
THIRD	99	99	111	111	115	123	113	148	134	138	132
FOURTH	117	102	101	104	115	112	123	110	151	133	138
FIFTH	89	118	105	102	108	109	107	121	107	151	133
SIXTH	95	92	122	105	0	0	0	0	0	0	0
SP ED	0	0	0	11	6	0	6	6	8	7	0
TOTAL K – 6	695	749	806	787	833	841	883	889	925	941	909
% CHANGE		7.8%	7.6%	-2.4%	5.8%	1.0%	5.0%	0.7%	4.0%	1.7%	-3.4%
<b>TOTAL K – 5</b>	<b>600</b>	<b>657</b>	<b>684</b>	<b>682</b>	<b>733</b>	<b>739</b>	<b>770</b>	<b>783</b>	<b>799</b>	<b>829</b>	<b>760</b>
% CHANGE		9.5%	4.1%	-0.3%	7.5%	0.8%	4.2%	1.7%	2.0%	3.8%	-8.3%
SIXTH	0	0	0	0	100	102	113	106	126	112	149
SEVENTH	84	86	100	118	110	97	103	113	109	128	110
EIGHTH	78	87	88	97	120	106	96	98	111	112	124
TOTAL 7 – 8	162	173	188	215	230	203	199	211	220	240	234
% CHANGE		6.8%	8.7%	14.4%	7.0%	-11.7%	-2.0%	6.0%	4.3%	9.1%	-2.5%
<b>TOTAL 6 – 8</b>	<b>257</b>	<b>265</b>	<b>310</b>	<b>320</b>	<b>330</b>	<b>305</b>	<b>312</b>	<b>317</b>	<b>346</b>	<b>352</b>	<b>383</b>
% CHANGE		3.1%	17.0%	3.2%	3.1%	-7.6%	2.3%	1.6%	9.1%	1.7%	8.8%
NINTH	65	81	80	83	95	115	99	90	99	108	110
TENTH	70	70	83	85	84	95	108	98	90	97	104
ELEVENTH	67	69	65	81	81	81	96	103	99	91	102
TWELFTH	56	61	70	65	77	76	80	95	102	101	89
TOTAL 9 - 12	258	281	298	314	337	367	383	386	390	397	405
% CHANGE		8.9%	6.0%	5.4%	7.3%	8.9%	4.4%	0.8%	1.0%	1.8%	2.0%
TOTAL K - 12	1,115	1,203	1,292	1,316	1,400	1,411	1,465	1,486	1,535	1,578	1,548
% CHANGE		7.9%	7.4%	1.9%	6.4%	0.8%	3.8%	1.4%	3.3%	2.8%	-1.9%

BLIND BROOK-RYE UNION FREE SCHOOL DISTRICT  
KINDERGARTEN PROJECTIONS

Year	Births.....		Village of Rye Brook	Year	District K	Ratio.....	
	Westchester County					County	Village
<b>1994</b>	13,002		105	<b>1999</b>	104	0.0080	0.9905
<b>1995</b>	12,980		82	<b>2000</b>	111	0.0086	1.3537
<b>1996</b>	12,696	yr-to-yr	87	<b>2001</b>	132	0.0104	1.5172
<b>1997</b>	12,655	changes	111	<b>2002</b>	111	0.0088	1.0000
<b>1998</b>	12,829		94	<b>2003</b>	149	0.0116	1.5851
<b>1999</b>	12,598	98.2%	98	<b>2004</b>	131	0.0104	1.3367
<b>2000</b>	13,300	105.6%	105	<b>2005</b>	138	0.0104	1.3143
<b>2001</b>	12,799	96.2%	123	<b>2006</b>	129	0.0101	1.0488
<b>2002</b>	12,807	100.1%	158	<b>2007</b>	136	0.0106	0.8608
<b>2003</b>	12,789	99.9%	131	<b>2008</b>	124	0.0097	0.9466
<b>2004</b>	12,405	97.0%	125	<b>2009</b>	93	0.0075	0.7440
<b>2005</b>	12,095	97.5%	110	<b>2010</b>	<b>108</b>		
<b>2006</b>	11,914	98.5%	80	<b>2011</b>	<b>107</b>	<b>5 yr avg</b>	
<b>2007</b>	11,857	99.5%	104	<b>2012</b>	<b>106</b>	<b>0.0097</b>	
<i>est.</i> <b>2008</b>	<b>12,026</b>			<b>2013</b>	<b>108</b>		
<i>est.</i> <b>2009</b>	<b>11,876</b>			<b>2014</b>	<b>106</b>	<b>projection ratio</b>	
<i>est.</i> <b>2010</b>	<b>11,771</b>	98.5%		<b>2015</b>	<b>105</b>	<b>0.0090</b>	
<i>est.</i> <b>2011</b>	<b>11,708</b>	avg change		<b>2016</b>	<b>105</b>	<b>5yr avg</b>	
<i>est.</i> <b>2012</b>	<b>11,667</b>	since 2003		<b>2017</b>	<b>104</b>	<b>w/trend change</b>	
<i>est.</i> <b>2013</b>	<b>11,630</b>			<b>2018</b>	<b>104</b>		
<i>est.</i> <b>2014</b>	<b>11,552</b>			<b>2019</b>	<b>103</b>		

Note: NY Health Dept. updated births after 2000. Additional updates are possible.  
 Note: NYS updates town/village births. As of Sept 2009, most current update includes 2002 forward.

BLIND BROOK-RYE UNION FREE SCHOOL DISTRICT  
 PROJECTED DISTRICT ENROLLMENT

GRADE	2009 current	2010	2011	2012	2013	2014	2015	2016	2017	2018	2019
KINDERGARTEN	93	108	107	106	108	106	105	105	104	104	103
FIRST	120	94	110	109	107	110	107	106	106	105	105
SECOND	144	120	94	110	109	107	110	107	106	106	105
THIRD	132	145	121	95	111	110	108	111	108	107	107
FOURTH	138	132	145	121	95	111	110	108	111	108	107
FIFTH	133	137	131	144	120	94	110	109	107	110	107
SIXTH	149	135	139	133	146	122	96	112	111	109	112
SEVENTH	110	150	136	140	134	147	123	97	113	112	110
EIGHTH	124	108	147	133	137	131	144	121	95	111	110
NINTH	110	123	107	145	131	135	129	142	120	94	110
TENTH	104	108	121	105	143	129	133	127	140	118	92
ELEVENTH	102	107	111	124	108	146	132	136	130	143	121
TWELFTH	89	101	106	110	123	107	145	131	135	129	142
TOTAL K - 12	1,548	1,568	1,575	1,575	1,572	1,555	1,552	1,512	1,486	1,456	1,431
% CHANGE		1.3%	0.4%	0.0%	-0.2%	-1.1%	-0.2%	-2.6%	-1.7%	-2.0%	-1.7%

Note: SP ED is in the (K - 5) grade level count.

BLIND BROOK-RYE UNION FREE SCHOOL DISTRICT  
PROJECTED DISTRICT ENROLLMENT

GRADE	2009 current	2010	2011	2012	2013	2014	2015	2016	2017	2018	2019
KINDERGARTEN	93	108	107	106	108	106	105	105	104	104	103
FIRST	120	94	110	109	107	110	107	106	106	105	105
SECOND	144	120	94	110	109	107	110	107	106	106	105
THIRD	132	145	121	95	111	110	108	111	108	107	107
FOURTH	138	132	145	121	95	111	110	108	111	108	107
FIFTH	133	137	131	144	120	94	110	109	107	110	107
<b>TOTAL K - 5</b>	<b>760</b>	<b>736</b>	<b>708</b>	<b>685</b>	<b>650</b>	<b>638</b>	<b>650</b>	<b>646</b>	<b>642</b>	<b>640</b>	<b>634</b>
% CHANGE		-3.2%	-3.8%	-3.2%	-5.1%	-1.8%	1.9%	-0.6%	-0.6%	-0.3%	-0.9%
SIXTH	149	135	139	133	146	122	96	112	111	109	112
SEVENTH	110	150	136	140	134	147	123	97	113	112	110
EIGHTH	124	108	147	133	137	131	144	121	95	111	110
<b>TOTAL 6 - 8</b>	<b>383</b>	<b>393</b>	<b>422</b>	<b>406</b>	<b>417</b>	<b>400</b>	<b>363</b>	<b>330</b>	<b>319</b>	<b>332</b>	<b>332</b>
% CHANGE		2.6%	7.4%	-3.8%	2.7%	-4.1%	-9.3%	-9.1%	-3.3%	4.1%	0.0%
NINTH	110	123	107	145	131	135	129	142	120	94	110
TENTH	104	108	121	105	143	129	133	127	140	118	92
ELEVENTH	102	107	111	124	108	146	132	136	130	143	121
TWELFTH	89	101	106	110	123	107	145	131	135	129	142
<b>TOTAL 9 - 12</b>	<b>405</b>	<b>439</b>	<b>445</b>	<b>484</b>	<b>505</b>	<b>517</b>	<b>539</b>	<b>536</b>	<b>525</b>	<b>484</b>	<b>465</b>
% CHANGE		8.4%	1.4%	8.8%	4.3%	2.4%	4.3%	-0.6%	-2.1%	-7.8%	-3.9%
<b>TOTAL K - 12</b>	<b>1,548</b>	<b>1,568</b>	<b>1,575</b>	<b>1,575</b>	<b>1,572</b>	<b>1,555</b>	<b>1,552</b>	<b>1,512</b>	<b>1,486</b>	<b>1,456</b>	<b>1,431</b>
% CHANGE		1.3%	0.4%	0.0%	-0.2%	-1.1%	-0.2%	-2.6%	-1.7%	-2.0%	-1.7%

Note: SP ED is in the (K - 5) grade level count.

BLIND BROOK-RYE UNION FREE SCHOOL DISTRICT  
 AVERAGE GRADE LEVEL SIZE

GRADE	1	2	3	4	change.....		
	99 - 04	04 - 09	09 - 14	14 - 19	2/1	3/2	4/3
KINDERGARTEN	123	<b>125</b>	105	105	<b>1.6%</b>	-16.0%	0.0%
FIRST	121	<b>135</b>	108	107	<b>11.6%</b>	-20.0%	-0.9%
SECOND	112	<b>135</b>	114	107	<b>20.5%</b>	-15.6%	-6.1%
THIRD	110	<b>131</b>	119	109	<b>19.1%</b>	-9.2%	-8.4%
FOURTH	109	<b>128</b>	124	109	<b>17.4%</b>	-3.1%	-12.1%
FIFTH	105	<b>121</b>	<b>127</b>	106	<b>15.2%</b>	<b>5.0%</b>	-16.5%
SIXTH	103	<b>118</b>	<b>137</b>	110	<b>14.6%</b>	<b>16.1%</b>	-19.7%
SEVENTH	99	<b>110</b>	<b>136</b>	117	<b>11.1%</b>	<b>23.6%</b>	-14.0%
EIGHTH	96	<b>108</b>	<b>130</b>	119	<b>12.5%</b>	<b>20.4%</b>	-8.5%
NINTH	87	<b>104</b>	<b>125</b>	122	<b>19.5%</b>	<b>20.2%</b>	-2.4%
TENTH	81	<b>99</b>	<b>118</b>	<b>123</b>	<b>22.2%</b>	<b>19.2%</b>	<b>4.2%</b>
ELEVENTH	74	<b>95</b>	<b>116</b>	<b>135</b>	<b>28.4%</b>	<b>22.1%</b>	<b>16.4%</b>
TWELFTH	68	<b>91</b>	<b>106</b>	<b>132</b>	<b>33.8%</b>	<b>16.5%</b>	<b>24.5%</b>

DISPLACEMENT BETWEEN ENTERING & EXITING GRADES

YEAR	GRADE 12	YEAR	K	DIFFERENCE
1999	56	2000	<b>111</b>	<b>55</b>
2000	61	2001	<b>132</b>	<b>71</b>
2001	70	2002	<b>111</b>	<b>41</b>
2002	65	2003	<b>149</b>	<b>84</b>
2003	77	2004	<b>131</b>	<b>54</b>
2004	76	2005	<b>138</b>	<b>62</b>
2005	80	2006	<b>129</b>	<b>49</b>
2006	95	2007	<b>136</b>	<b>41</b>
2007	102	2008	<b>124</b>	<b>22</b>
2008	<b>101</b>	2009	93	-8
2009	89	2010	<b>108</b>	<b>19</b>
2010	101	2011	<b>107</b>	<b>6</b>
2011	106	2012	106	0
2012	<b>110</b>	2013	108	-2
2013	<b>123</b>	2014	106	-17
2014	<b>107</b>	2015	105	-2
2015	<b>145</b>	2016	105	-40
2016	<b>131</b>	2017	104	-27
2017	<b>135</b>	2018	104	-31
2018	<b>129</b>	2019	103	-26
Average Difference 1999 - 2004				<b>61</b>
Average Difference 2004 - 2009				<b>33</b>
Average Difference 2009 - 2014				<b>1</b>
Average Difference 2014 - 2019				-25

=====

B.M. PONTERIO/RIDGE STREET SCHOOL  
HISTORICAL ENROLLMENT

with revised kindergarten projections

GRADE	1999	2000	2001	2002	2003	2004	2005	2006	2007	2008	2009
KINDERGARTEN	104	111	132	111	149	131	138	129	136	124	93
FIRST	101	115	121	126	116	147	137	133	131	144	120
SECOND	90	112	114	117	124	117	146	136	132	132	144
THIRD	99	99	111	111	115	123	113	148	134	138	132
FOURTH	117	102	101	104	115	112	123	110	151	133	138
FIFTH	89	118	105	102	108	109	107	121	107	151	133
SIXTH	95	92	122	105	0	0	0	0	0	0	0
SP ED	0	0	0	11	6	0	6	6	8	7	0
<b>TOTAL (K – 6) or (K – 5)</b>	<b>695</b>	<b>749</b>	<b>806</b>	<b>787</b>	<b>733</b>	<b>739</b>	<b>770</b>	<b>783</b>	<b>799</b>	<b>829</b>	<b>760</b>
<b>% CHANGE</b>		<b>7.8%</b>	<b>7.6%</b>	<b>-2.4%</b>	<b>-6.9%</b>	<b>0.8%</b>	<b>4.2%</b>	<b>1.7%</b>	<b>2.0%</b>	<b>3.8%</b>	<b>-8.3%</b>

Note: 2009-10 SP ED is in the grade level count.

MIGRATION	99 - 00	00 - 01	01 - 02	02 - 03	03 - 04	04 - 05	05 - 06	06 - 07	07 - 08	08 - 09	AVERAGE
K - 1	110.6%	109.0%	95.5%	104.5%	98.7%	104.6%	96.4%	101.6%	105.9%	96.8%	101.4%
1 - 2	110.9%	99.1%	96.7%	98.4%	100.9%	99.3%	99.3%	99.2%	100.8%	100.0%	100.0%
2 - 3	110.0%	99.1%	97.4%	98.3%	99.2%	96.6%	101.4%	98.5%	104.5%	100.0%	101.0%
3 - 4	103.0%	102.0%	93.7%	103.6%	97.4%	100.0%	97.3%	102.0%	99.3%	100.0%	99.7%
4 - 5	100.9%	102.9%	101.0%	103.8%	94.8%	95.5%	98.4%	97.3%	100.0%	100.0%	99.1%
5 - 6	103.4%	103.4%	100.0%	* 6th grade moved to Middle School after 2003							

=====

B.M. PONTERIO/RIDGE STREET SCHOOL  
PROJECTED ENROLLMENT

GRADE	2009	2010	2011	2012	2013	2014	2015	2016	2017	2018	2019
	current										
KINDERGARTEN	93	108	107	106	108	106	105	105	104	104	103
FIRST	120	94	110	109	107	110	107	106	106	105	105
SECOND	144	120	94	110	109	107	110	107	106	106	105
THIRD	132	145	121	95	111	110	108	111	108	107	107
FOURTH	138	132	145	121	95	111	110	108	111	108	107
FIFTH	133	137	131	144	120	94	110	109	107	110	107
<b>TOTAL K - 5</b>	<b>760</b>	<b>736</b>	<b>708</b>	<b>685</b>	<b>650</b>	<b>638</b>	<b>650</b>	<b>646</b>	<b>642</b>	<b>640</b>	<b>634</b>
<b>% CHANGE</b>		<b>-3.2%</b>	<b>-3.8%</b>	<b>-3.2%</b>	<b>-5.1%</b>	<b>-1.8%</b>	<b>1.9%</b>	<b>-0.6%</b>	<b>-0.6%</b>	<b>-0.3%</b>	<b>-0.9%</b>

B.M. PONTERIO/RIDGE STREET SCHOOL  
 PROJECTED ENROLLMENT -- SECTIONAL ANALYSIS

max class size = 24

GRADE	2009	2010	2011	2012	2013	2014	2015	2016	2017	2018	2019
	current										
KINDERGARTEN	93	108	107	106	108	106	105	105	104	104	103
# of Sections	5	5	5	5	5	5	5	5	5	5	5
Avg Section Size	18.6	21.6	21.4	21.2	21.6	21.2	21.0	21.0	20.8	20.8	20.6
FIRST	120	94	110	109	107	110	107	106	106	105	105
# of Sections	6	4	5	5	5	5	5	5	5	5	5
Avg Section Size	20.0	23.5	22.0	21.8	21.4	22.0	21.4	21.2	21.2	21.0	21.0
SECOND	144	120	94	110	109	107	110	107	106	106	105
# of Sections	6	5	4	5	5	5	5	5	5	5	5
Avg Section Size	24.0	24.0	23.5	22.0	21.8	21.4	22.0	21.4	21.2	21.2	21.0
THIRD	132	145	121	95	111	110	108	111	108	107	107
# of Sections	6	7	6	4	5	5	5	5	5	5	5
Avg Section Size	22.0	20.7	20.2	23.8	22.2	22.0	21.6	22.2	21.6	21.4	21.4
FOURTH	138	132	145	121	95	111	110	108	111	108	107
# of Sections	6	6	7	6	4	5	5	5	5	5	5
Avg Section Size	23.0	22.0	20.7	20.2	23.8	22.2	22.0	21.6	22.2	21.6	21.4
FIFTH	133	137	131	144	120	94	110	109	107	110	107
# of Sections	6	6	6	6	5	4	5	5	5	5	5
Avg Section Size	22.2	22.8	21.8	24.0	24.0	23.5	22.0	21.8	21.4	22.0	21.4
SP ED											
# of Sections	2	2	2	2	2	2	2	2	2	2	2
Total Enrollment	760	736	708	685	650	638	650	646	642	640	634
Total Sections	37	35	35	33	31	31	32	32	32	32	32
Avg Section Size	21.6	22.4	21.6	22.2	22.5	22.1	21.7	21.5	21.4	21.3	21.1
Note: SP ED is in the grade level count. The actual class size for K-5 may be lower than shown.											
* 1 full size classroom for BOCES since 2008-09.											
# of Sections	1	1	1	1	1	1	1	1	1	1	1
Total Sections w/BOCES	38	36	36	34	32	32	33	33	33	33	33

BLIND BROOK MIDDLE SCHOOL/HIGH SCHOOL  
HISTORICAL ENROLLMENT

GRADE	1999	2000	2001	2002	2003	2004	2005	2006	2007	2008	2009
SIXTH	0	0	0	0	100	102	113	106	126	112	149
SEVENTH	84	86	100	118	110	97	103	113	109	128	110
EIGHTH	78	87	88	97	120	106	96	98	111	112	124
NINTH	65	81	80	83	95	115	99	90	99	108	110
TENTH	70	70	83	85	84	95	108	98	90	97	104
ELEVENTH	67	69	65	81	81	81	96	103	99	91	102
TWELFTH	56	61	70	65	77	76	80	95	102	101	89
<b>TOTAL (7 – 8) or (6 – 8)</b>	162	173	188	215	<b>330</b>	<b>305</b>	<b>312</b>	<b>317</b>	<b>346</b>	<b>352</b>	<b>383</b>
% CHANGE		6.8%	8.7%	14.4%	53.5%	-7.6%	2.3%	1.6%	9.1%	1.7%	8.8%
<b>TOTAL 9 – 12</b>	258	281	298	314	337	367	383	386	390	397	405
% CHANGE		8.9%	6.0%	5.4%	7.3%	8.9%	4.4%	0.8%	1.0%	1.8%	2.0%
<b>TOTAL (7 – 12) or (6 – 12)</b>	420	454	486	529	<b>667</b>	<b>672</b>	<b>695</b>	<b>703</b>	<b>736</b>	<b>749</b>	<b>788</b>
% CHANGE		8.1%	7.0%	8.8%	26.1%	0.7%	3.4%	1.2%	4.7%	1.8%	5.2%
MIGRATION	99 - 00	00 - 01	01 - 02	02 - 03	03 - 04	04 - 05	05 - 06	06 - 07	07 - 08	08 - 09	<b>AVERAGE</b>
6 - 7					97.0%	101.0%	100.0%	102.8%	101.6%	98.2%	100.9%
7 - 8	103.6%	102.3%	97.0%	101.7%	96.4%	99.0%	95.1%	98.2%	102.8%	96.9%	98.0%
8 - 9	103.8%	92.0%	94.3%	97.9%	95.8%	93.4%	93.8%	101.0%	97.3%	98.2%	98.8%
9 - 10	107.7%	102.5%	106.3%	101.2%	100.0%	93.9%	99.0%	100.0%	98.0%	96.3%	98.3%
10 - 11	98.6%	92.9%	97.6%	95.3%	96.4%	101.1%	95.4%	101.0%	101.1%	105.2%	102.4%
11 - 12	91.0%	101.4%	100.0%	95.1%	93.8%	98.8%	99.0%	99.0%	102.0%	97.8%	99.1%

BLIND BROOK MIDDLE SCHOOL  
PROJECTED ENROLLMENT

GRADE	2009 current	2010	2011	2012	2013	2014	2015	2016	2017	2018	2019
SIXTH	149	135	139	133	146	122	96	112	111	109	112
SEVENTH	110	150	136	140	134	147	123	97	113	112	110
EIGHTH	124	108	147	133	137	131	144	121	95	111	110
<b>TOTAL</b>	<b>383</b>	<b>393</b>	<b>422</b>	<b>406</b>	<b>417</b>	<b>400</b>	<b>363</b>	<b>330</b>	<b>319</b>	<b>332</b>	<b>332</b>
% CHANGE		2.6%	7.4%	-3.8%	2.7%	-4.1%	-9.3%	-9.1%	-3.3%	4.1%	0.0%

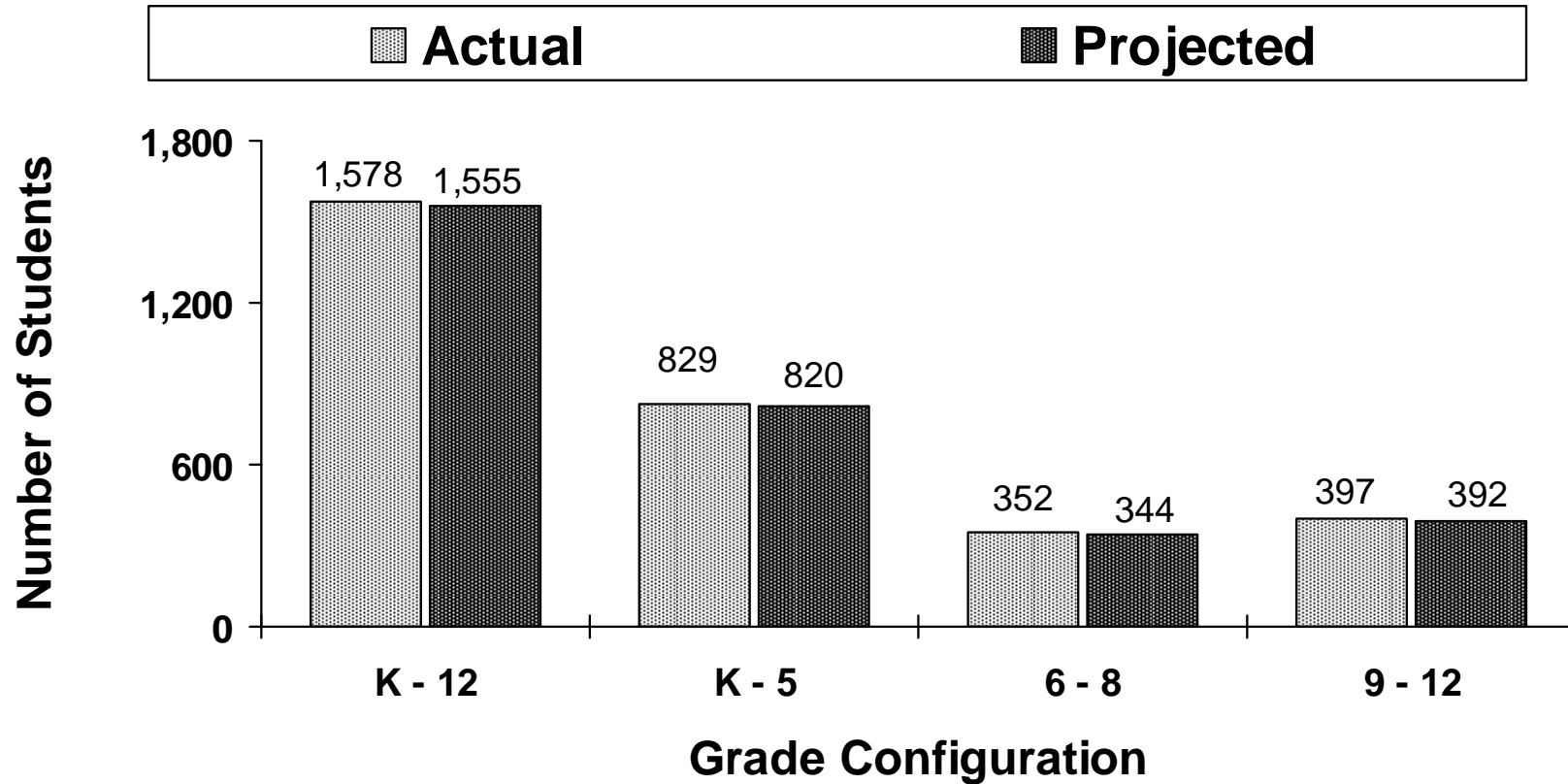
BLIND BROOK HIGH SCHOOL  
PROJECTED ENROLLMENT

GRADE	2009 current	2010	2011	2012	2013	2014	2015	2016	2017	2018	2019
NINTH	110	123	107	145	131	135	129	142	120	94	110
TENTH	104	108	121	105	143	129	133	127	140	118	92
ELEVENTH	102	107	111	124	108	146	132	136	130	143	121
TWELFTH	89	101	106	110	123	107	145	131	135	129	142
<b>TOTAL</b>	<b>405</b>	<b>439</b>	<b>445</b>	<b>484</b>	<b>505</b>	<b>517</b>	<b>539</b>	<b>536</b>	<b>525</b>	<b>484</b>	<b>465</b>
% CHANGE		8.4%	1.4%	8.8%	4.3%	2.4%	4.3%	-0.6%	-2.1%	-7.8%	-3.9%

# Blind Brook-Rye UFSD

Accuracy of 2007/08 Western Suffolk BOCES Projection

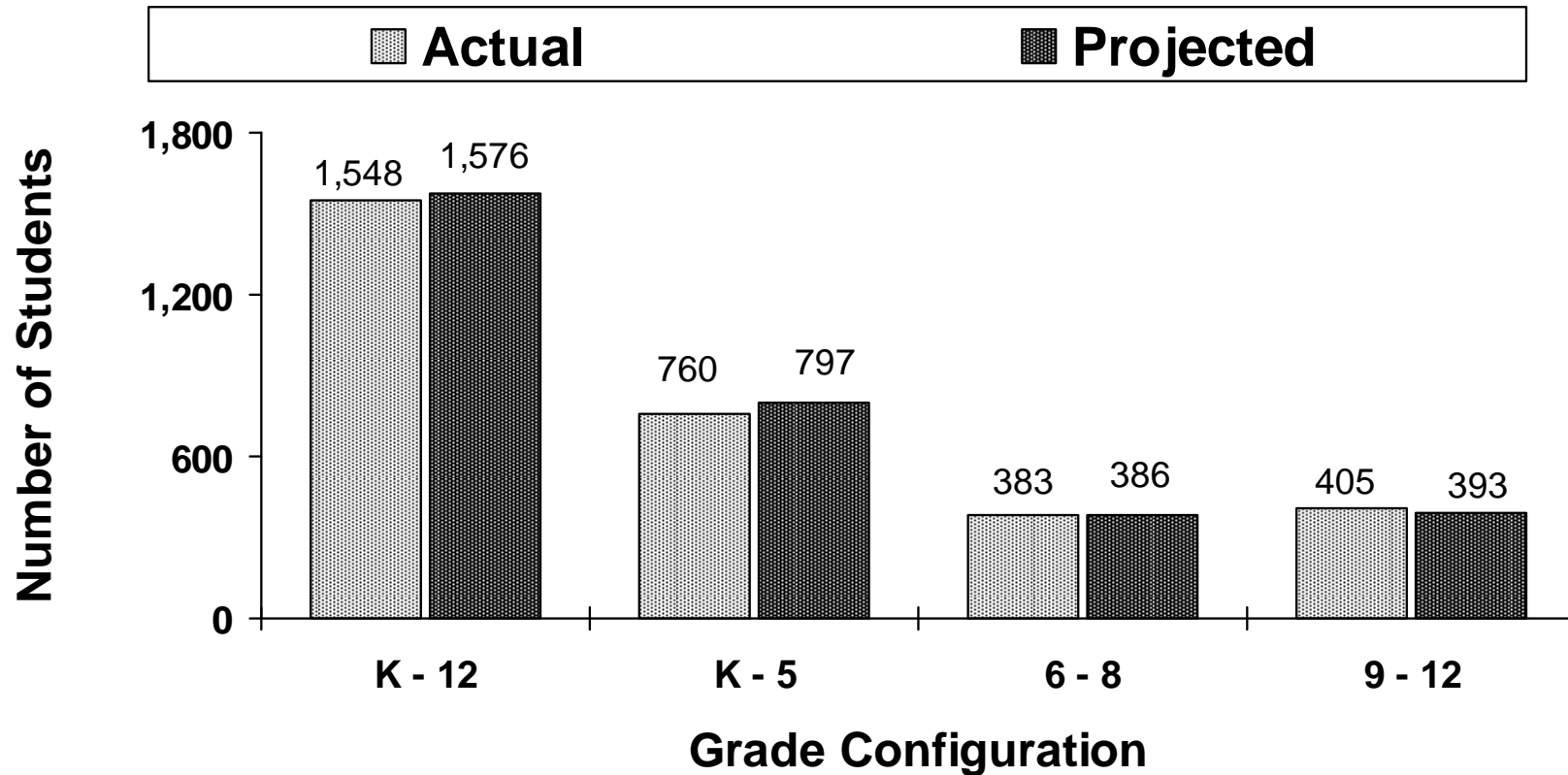
## 2008/09 Enrollment



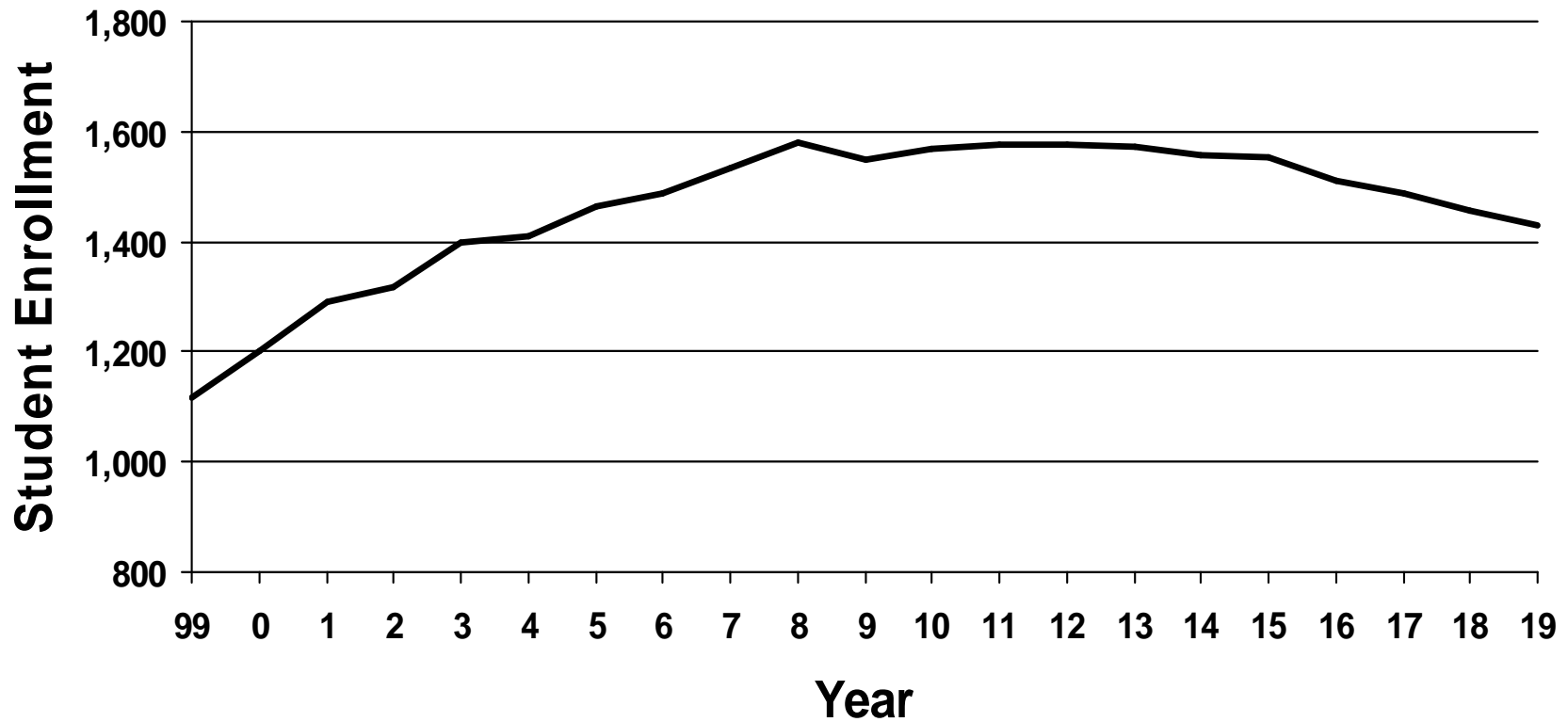
# Blind Brook-Rye UFSD

Accuracy of 2007/08 Western Suffolk BOCES Projection

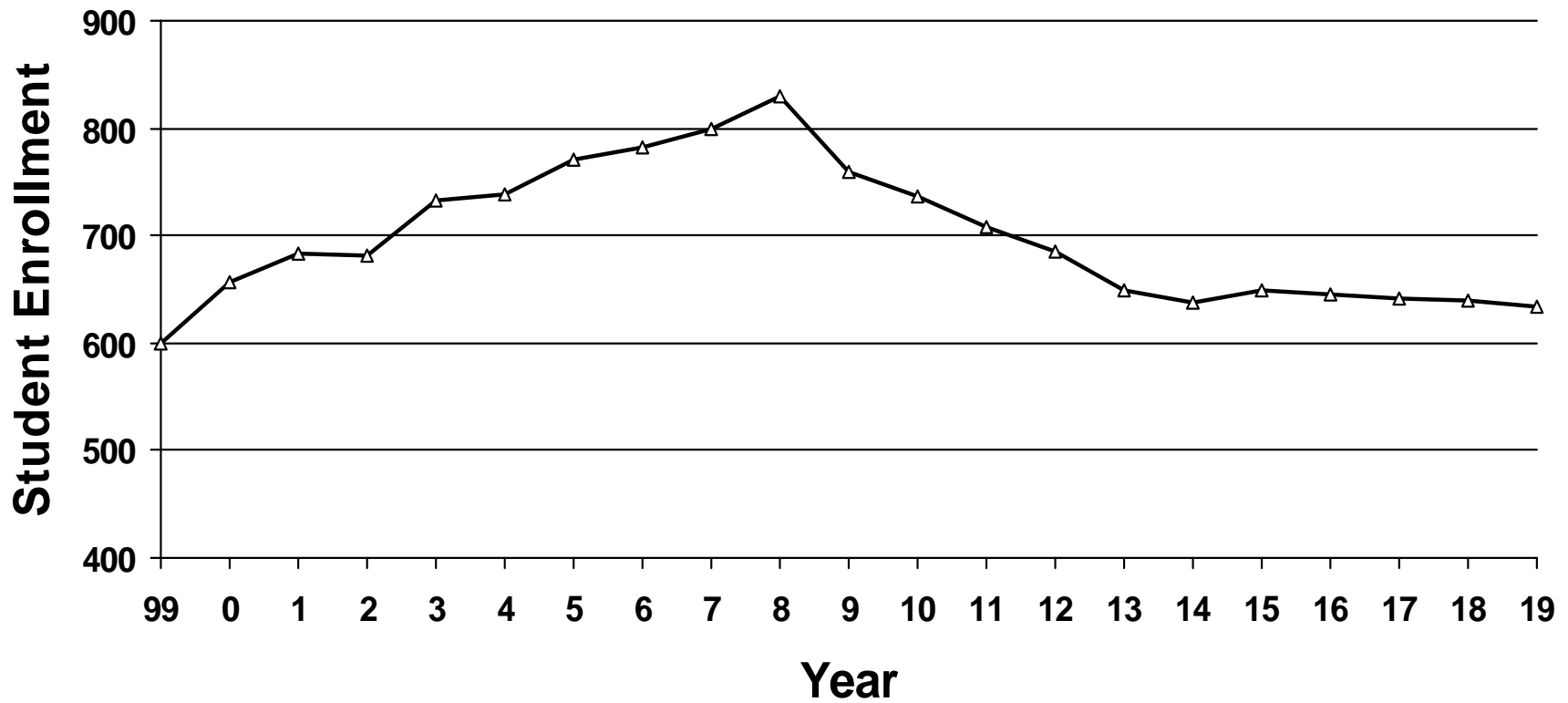
## 2009/10 Enrollment



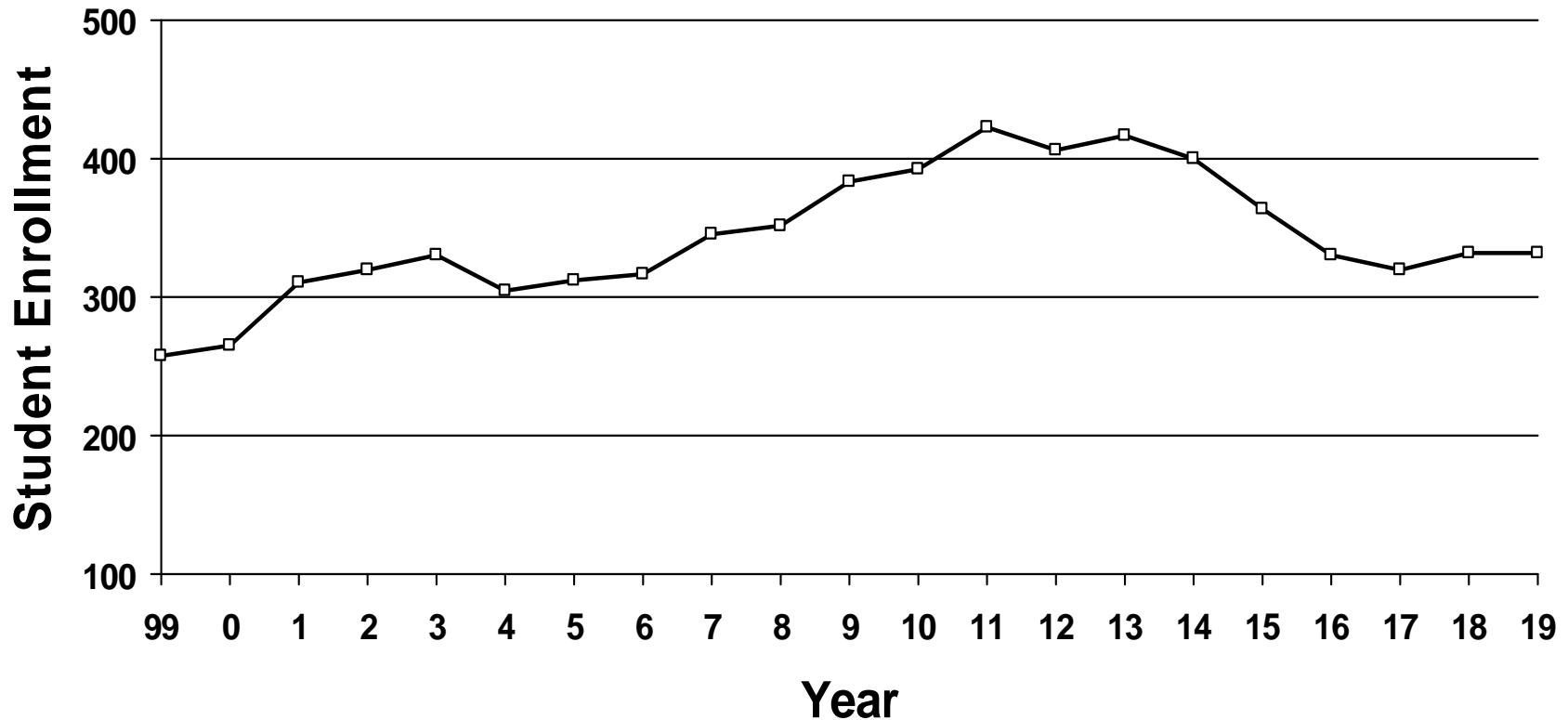
# Blind Brook-Rye UFSD Enrollment: Grades K - 12



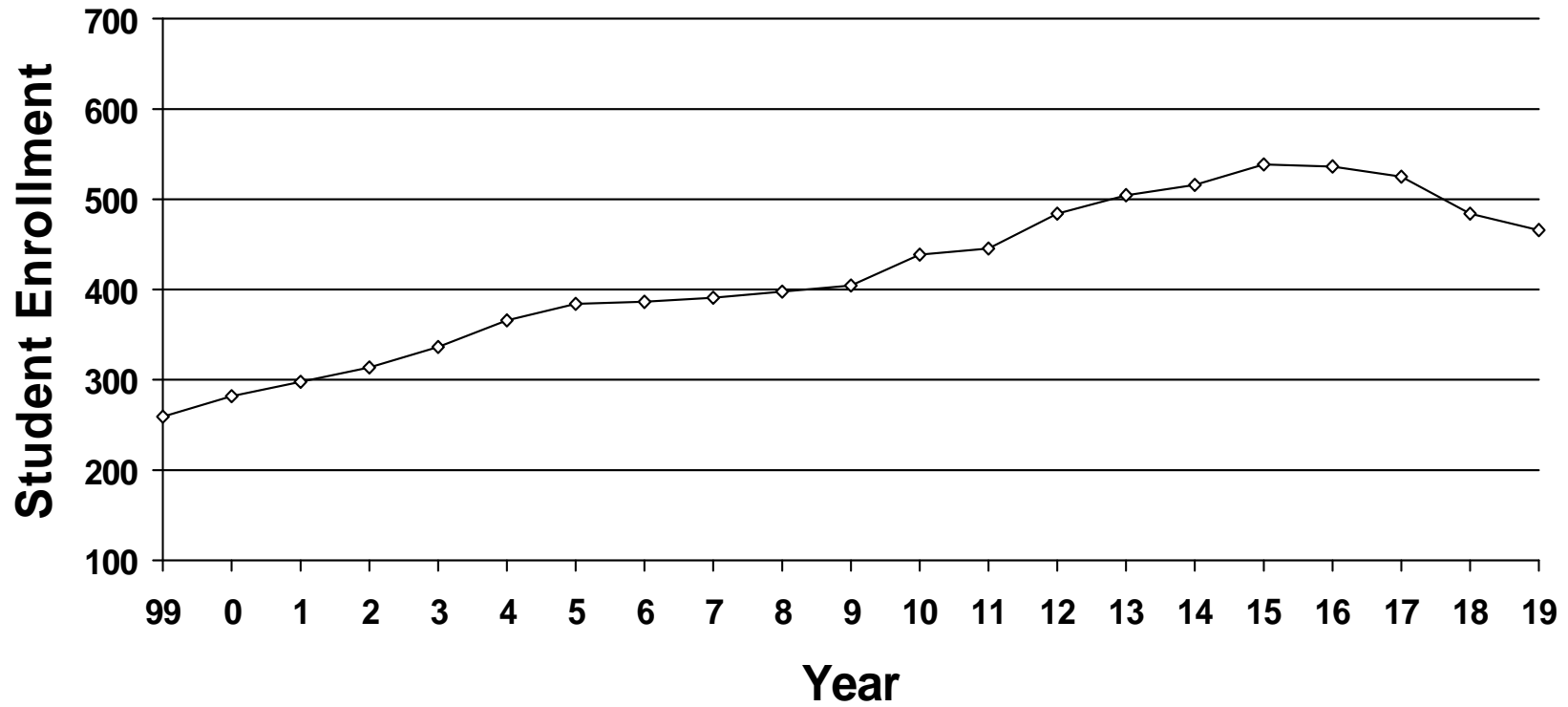
# Blind Brook-Rye UFSD Enrollment: Grades K - 5



# Blind Brook-Rye UFSD Enrollment: Blind Brook Middle School Grades 6 - 8



# Blind Brook-Rye UFSD Enrollment: Blind Brook High School Grades 9 - 12



# Blind Brook-Rye UFSD

## School Enrollment Change 1999 - 2019

