

Blind Brook - Rye Union Free School District



CAPITAL PROJECT UPDATE

February 18, 2021



B.M.P. Ridge St School – Additions and Alterations

Construction Team:

- General Contractor: Niram, Inc.
- Mechanical Contractor: Clean Air Quality Systems
- Electrical Contractor: Talt, Inc.
- Plumbing Contractor: S and L Plumbing and Heating

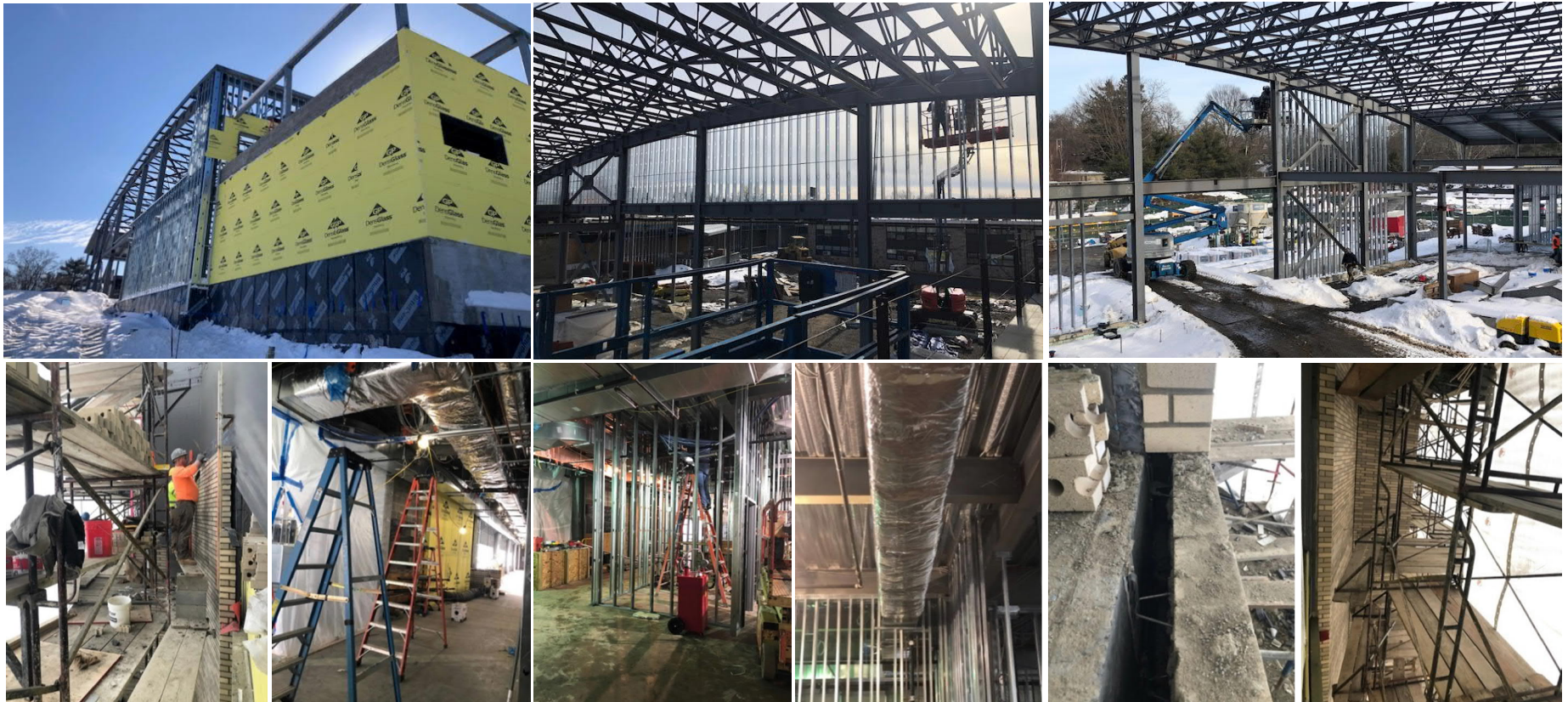


B.M.P. Ridge St School – Additions and Alterations

Construction in Progress up to February 17, 2021

The scope of the ongoing work in progress includes:

- The General Contractor has been continuing with framing out the interior and exterior walls, and continuing to install sheathing and insulation on the first and second floors at the two-story addition, and CFMF (Cold Formed Metal Framing) around the perimeter of the new cafetorium, installing sheetrock on the first and second floors of the new addition. They have also commenced with grading on the East side of the new addition and excavation for the new exterior steps at the Enrichment Center.
- The masonry contractor has completed the brick work on the North side of the new addition, including Stair Tower A.
- The HVAC contractor is continuing to install duct work as well as fire dampers, heating piping and insulation.
- The electrician is continuing to install conduits, switch boxes and outlets on the first and second floors of the new addition. They are also running data wire on the first and second floors of the new addition.



Blind Brook Middle School / High School – Additions and Alterations

Construction Team:

- General Contractor: Bertussi Contracting
- Mechanical Contractor: S and L Plumbing and Heating
- Electrical Contractor: Talt, Inc.
- Plumbing Contractor: S and L Plumbing and Heating

Construction in Progress:

- The controllers for the BAS system were installed. The power wiring for both RTU's has been completed and the manufacturer's start up is scheduled for Tuesday, February 23rd.
- A meeting is being scheduled onsite next week with the contractors and architect to finalize the exterior retaining wall reconfigurations required by the existing elevations.
- We are still awaiting the installation of several low voltage devices.

